

## PROCEEDINGS OF THE AUSTRALIAN RANGELAND SOCIETY

### 19<sup>th</sup> BIENNIAL CONFERENCE

Official publication of The Australian Rangeland Society

#### Copyright and Photocopying

© The Australian Rangeland Society 2017. All rights reserved.

For non-personal use, no part of this item may be reproduced, stored in a retrieval system, or transmitted in any form or by any means, electronic, mechanical, photocopying, recording, or otherwise, without prior permission of the Australian Rangeland Society and of the author (or the organisation they work or have worked for). Permission of the Australian Rangeland Society for photocopying of articles for non-personal use may be obtained from the Secretary who can be contacted at the email address, [secretary@austrangesoc.com.au](mailto:secretary@austrangesoc.com.au)

For personal use, temporary copies necessary to browse this site on screen may be made and a single copy of an article may be downloaded or printed for research or personal use, but no changes are to be made to any of the material. This copyright notice is not to be removed from the front of the article.

All efforts have been made by the Australian Rangeland Society to contact the authors. If you believe your copyright has been breached please notify us immediately and we will remove the offending material from our website.

#### Form of Reference

The reference for this article should be in this general form:

Author family name, initials (year). Title. In: Proceedings of the 19th Australian Rangeland Society Biennial Conference. Pages. (Australian Rangeland Society: Australia).

For example:

Bastin, G., Sparrow, A., Scarth, P., Gill, T., Barnetson, J. and Staben, G. (2015). Are we there yet? Tracking state and change in Australia's rangelands. In: 'Innovation in the Rangelands. Proceedings of the 18th Australian Rangeland Society Biennial Conference, Alice Springs'. (Ed. M.H. Friedel) 5 pages. (Australian Rangeland Society: Parkside, SA).

#### Disclaimer

The Australian Rangeland Society and Editors cannot be held responsible for errors or any consequences arising from the use of information obtained in this article or in the Proceedings of the Australian Rangeland Society Biennial Conferences. The views and opinions expressed do not necessarily reflect those of the Australian Rangeland Society and Editors, neither does the publication of advertisements constitute any endorsement by the Australian Rangeland Society and Editors of the products.



*The Australian Rangeland Society*

# Using FarmMaps 4D to improve management of Indigenous pastoral infrastructure

Joel Dillon 1, Peter Cunningham 2

1. Indigenous Land Corporation, GPO Box 652, ADELAIDE SA 5001, Australia. E: joel.dillon@ilc.gov.au. Ph: 08 8100 7100

2. Australian Indigenous Agribusiness Company, PO Box 7502, CLOISTERS SQUARE WA 6850, Australia, E: peter.cunningham@ilc.gov.au. Ph: 08 9420 6300

## Abstract

The Indigenous Land Corporation (ILC) assists Aboriginal and Torres Strait Islander people to acquire and manage land to achieve economic, environmental, social, and cultural benefits.

To support this the ILC maintains a spatial database of property infrastructure information, including property layout, fencing, water points, and other features, for more than 160 Indigenous and ILC-held properties across Australia. The quality and consistency of this information varies depending on information availability and managers, limited access to the information on remote properties or ability to improve it.

To address these issues, the ILC, through its wholly owned subsidiary the Australian Indigenous Agribusiness Company (AIA) [formerly National Indigenous Pastoral Enterprises (NIPE)]<sup>1</sup>, started a project in 2016 to develop detailed property infrastructure information using its in-house Indigenous mapping capability, starting with fifteen NIPE-managed properties.

The FarmMap 4D (FM4D) online application [formerly known as the NRM Spatial Hub]<sup>2</sup> was used to deliver information to the remote property managers. Managers can use FM4D to dynamically view and overlay map layers, and generate maps and reports, to support more effective land management and planning. This single source of information is accessed by project managers, contractors, and property managers alike.

But how did the ILC develop its property information, how is the ILC using the FM4D, and what are the ILC's plans for the future? Moreover, how is this project improving the ability of the ILC and AIA to deliver benefits to Indigenous people?

**keywords:** ILC, AIA, Agribusiness, Indigenous, FarmMap 4D, Mapping

## Introduction

The ILC and AIA are using the FM4D online application to support the management of remote Agribusinesses set up to provide benefits for Indigenous people.

In 2014, after AIA and ILC staff attended a remote sensing pastoral management workshop, the ILC was invited to take part in the FM4D online farm planning and information system pilot. The ILC began reconciling its property infrastructure for use in FM4D but, due to a lack of dedicated resources, minimal progress was made until 2016, when a nine-month AIA funded pilot project was established to collate and refine existing property infrastructure information, and digitise missing information for upload into FM4D.

---

<sup>1</sup> Prior to a name change on 29 June 2017, AIA operated as NIPE. For consistency, this paper will use the current operating name, AIA.

<sup>2</sup> Prior to a name change on 1 July 2017, the FarmMap 4D web application was known as the NRM Spatial Hub. For consistency, this paper will use the current operating name, FarmMap 4D.





In Northern Australia AIA uses FM4D to assist in stock watering planning. Using the system's distance from water analysis and ground cover analysis tools, the property managers are able to identify the ideal locations for commissioning new bores and watering points.

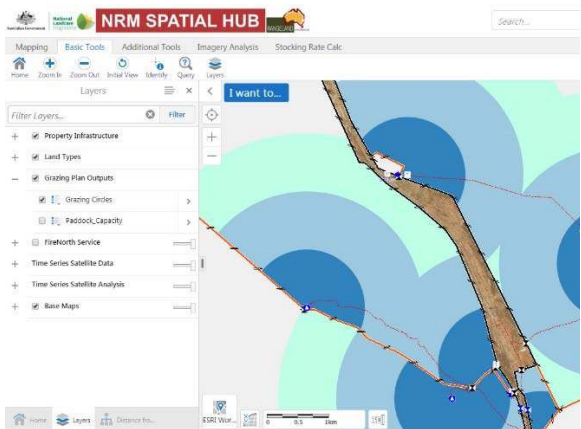


Figure 3. FM4D interface showing the output from the distance from water (cattle grazing) circles tool.

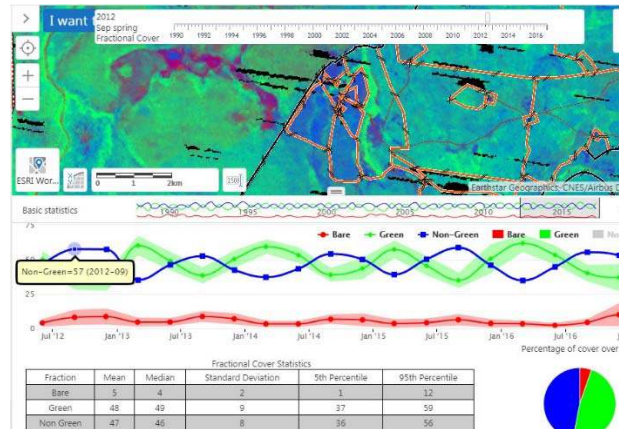


Figure 4. Fractional cover imagery and fractional cover statistics over an agribusiness.

The system is used to generate maps for consultation and works planning with Traditional Owners (TOs) and other stakeholders. Station managers have been able to effectively work with the Traditional Owners to ensure the best location of roads and water points on property (see figure 5).

One AIA property is now using FM4D to manage pastoral infrastructure assets by tracking the condition of yards, water points, and fences. This enables the property to budget for asset maintenance and assist the planning of capital works projects. For example: "if a 10km length of three-strand fence was built in 2010, with an expected life of fifteen years, the fence should be considered for replacement in 2025". By maintaining this information in the FM4D the property is building a detailed schedule of assets to support the agribusinesses' budgeting and insurance needs.

This approach has already demonstrated its value on a trial property and will be implemented as standard practice across all of the AIA agribusinesses in the near future (see figure 6).



Figure 5. TO Ron Barron on a newly graded road in the Mid-West WA



Figure 6. Cattle management planning in The Kimberley.

## Discussion

Using this data management process, the project could improve the quality and timeliness of map delivery and data maintenance for each property. The iterative nature of the project enabled the refinement of practices and tools as the project progressed, delivering an increasing quality of output. It also made use of the best information available – including combining remotely sensed, historical data and on-property knowledge – to develop the most accurate spatial and related data.

Although FM4D is a valuable application, it requires buy-in by the property managers to invest their time in learning and using the system, while still managing daily operations.

Despite involving property managers in all stages of the project, uptake has not happened as quickly as first expected. In future, uptake could be improved by building greater capability within AIA project officers who could work directly with property managers to refine the data and generate printed outputs.

AIA's Western Operations Manager is already worked closely with several properties in Western Australia with great success. Supporting AIA agribusinesses to involve young Indigenous workers in this process could help share the load and develop expertise among a new generation of Indigenous workers in the agricultural sector.

For the project to remain a success, buy-in from the business is essential. To provide an increasing return on investment the business must drive the project. This requires improved communication of the business benefits of the data and system, and implementation of standardised property management processes. More comprehensively embedding the use of the system into standard property operations will also increase the business value the data and system provides.

Furthermore, for the system to inform business decisions, the data in FM4D must be routinely maintained to ensure currency and consistency across agribusinesses. This can be achieved if the maintenance of the property infrastructure information in FM4D is brought into core business processes. Good agribusiness information supports good agribusiness decisions.

## **What we would do differently**

Due to time and budget restrictions, the project team was not able to ground truth infrastructure information. Instead, the advice of AIA station managers was relied on for on-site observations. Visiting properties ourselves would have provided an improved appreciation of property layout, enabled a higher quality product, and assisted in confirming infrastructure details that could not be confirmed remotely.

The project would also have benefited from more system champions within AIA to encourage the adoption of FM4D and to support training for property staff.

## **Future plans**

The ILC intends to continue working with FM4D to expand AIA's access to ILC property infrastructure information. The project has been extended to the end of 2017 with the intention of further extending it into 2018.

Within the ILC, FM4D is being used to support accounting, land management, and Natural Capital Accounting projects. The ILC is keen to standardise implementation of the FM4D across the ILC groups to underpin the continued improvement of property and project management and assist the ILC to continue building a detailed understanding of Indigenous Held Land.

Through integration with standard business workflow, property infrastructure information can be used to underpin existing property and project management, insurance, asset management, and herd management systems to better inform business decisions.

The ILC will continue to increase collaboration with AIA agribusinesses, standardise use of the FM4D, and ensure managers are trained and resourced sufficiently to use the system.

## **Conclusion**

The pilot project has succeeded in building knowledge of agribusiness property infrastructure for use with FM4D.

It has reinforced the importance of working closely with businesses and ensuring that staff are adequately supported.

It demonstrated the business benefits of collating and collaboratively managing information and showed that there is significant potential for streamlining decision making through integration with existing systems.

We are happy to see the growing interest in extending the project's scope in the future.